

Image © Specialty Products and Services

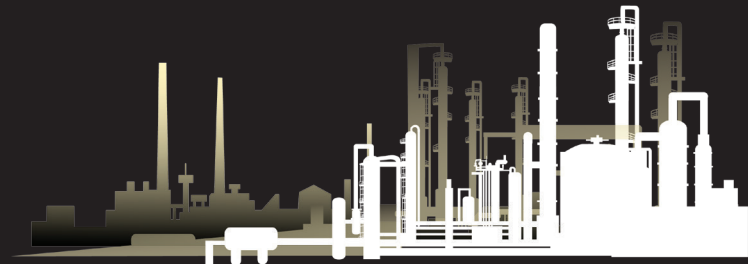
Successful Dismantling of a 40-Meter-High and 72-Meter-Long COG Gas Pipeline Within 24 Hours

Findings :

Project Scope: The client requested the dismantling of a Coke Oven Gas (COG) pipeline within a strict 24-hour shutdown window. This shutdown was granted after a 2-year wait, highlighting the critical need for efficient completion. The pipeline, situated 40m above ground in the LD#2 Heat Area, was 72m long and divided into 12 sections, each 6m in length.

Challenges :

The elevated location of the pipeline, coupled with ongoing vehicle and human activity in the area, presented substantial logistical and safety challenges. These difficulties were heightened by the hazardous nature of the LD Heat Area, a high-risk zone due to flammable and explosive gases, high-temperature operations, and the demand for precise rigging work.



ASSESSMENT

Risk Evaluation :

An extensive risk assessment underscored the vital need for precise team coordination, the secure establishment of rigging points, and the controlled use of cranes to safely lower the dismantled pipeline sections. In light of the area's high-risk nature, stringent safety protocols were rigorously enforced to avert any potential accidents.

Team Deployment :

Four teams, each with 6 members (a total of 24 people), were deployed in shifts: 2 teams during the day and 2 at night. This setup ensured continuous progress while maintaining safety and quality, enabling the team to stay on schedule despite the demanding conditions.

SOLUTION PROVIDED

Strategic Planning :

The team approached the with diligence, formulating a detailed plan for rigging and crane operations. This plan was meticulously designed to address the high-risk factors associated with the LD Heat Area, ensuring strict adherence to all safety protocols and standards.

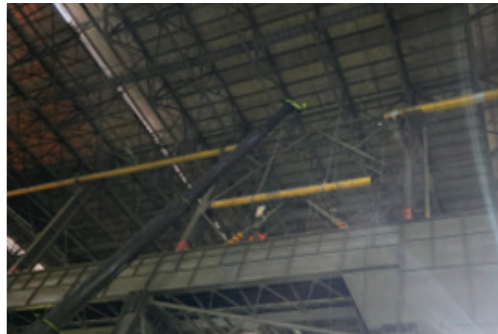


Image © Specialty Products and Services

Execution :

Leveraging crane support, the team efficiently dismantled and lowered the 72-metre-long pipeline sections within the tight 24-hour shutdown window. The operation was executed with remarkable precision, causing minimal disruption to the plant's ongoing activities. This achievement underscores SPS's exceptional capability to perform effectively under pressure in a high-risk environment.

RECOGNITION BY CUSTOMER

Acknowledgement :

The successful completion of this high-risk task within the stipulated time frame earned SPS a certificate of appreciation from the Field Maintenance Mechanical Department. The recognition highlighted the team's valuable support, dedication to the plant's maintenance, and their ability to overcome significant challenges in a high-risk zone.